

maison  
amiel



---

  
amiel  
LITERIE

  
natoma

**NUANCIER**

## SAHARA SÉRIE A

### COMPOSITION

PVC : 80%, Polyester : 18%, Polyuréthane : 2%

### RÉSISTANCE À L'ABRASION (ISO 12947/1-2)

25 000 cycles Martindale

### TENUE À LA LUMIÈRE (ISO 105 -B02)

5/5

*Revêtement lavable à l'aide d'une éponge humide.  
Ne pas utiliser de produits détergents.*

## ROMER SÉRIE A

### COMPOSITION

Polyester : 100%

### RÉSISTANCE À L'ABRASION (ISO 12947/1-2)

45 000 cycles Martindale

*Lavage déconseillé.*

*Ne pas utiliser de produits détergents.*

## LUTI SÉRIE A

### COMPOSITION

Polyester : 100%

### RÉSISTANCE À L'ABRASION (ISO 12947/1-2)

30 000 cycles Martindale

### TENUE À LA LUMIÈRE (ISO 105 -B02)

4/5

*Lavage déconseillé.  
Ne pas utiliser de produits détergents.*

## MADONE & PANA SÉRIE B

### COMPOSITION

Polyester : 92%, Nylon : 8%

### RÉSISTANCE À L'ABRASION (ISO 12947/1-2)

+25 000 cycles Martindale

### TENUE À LA LUMIÈRE (ISO 105 -B02)

3-4/5

### TRAITEMENT

Bionic Finish

*Traitement hydrofuge et anti-tâches.*

## ALEXANDER SÉRIE B

### COMPOSITION

Polyester : 100%

### RÉSISTANCE À L'ABRASION (ISO 12947/1-2)

+45 000 cycles Martindale

### TENUE À LA LUMIÈRE (ISO 105 -B02)

4-5/5

### TRAITEMENT

Hydrofuge

*Lavage déconseillé.*

*Ne pas utiliser de produits détergents.*

## NATUR SÉRIE B

### COMPOSITION

PET : 45%, PU : 55%

### RÉSISTANCE À L'ABRASION (ISO 12947/1-2)

50 000 cycles Martindale

### TENUE À LA LUMIÈRE (ISO 105 -B02)

5/5

### TRAITEMENT

Ignifugé norme EN1021-1

*Revêtement lavable à l'aide d'une éponge humide.  
Ne pas utiliser de produits détergents..*

## MONTECARLO SÉRIE B

### COMPOSITION

Surface : Polyuréthane : 100%  
Base : Polyester : 100%

### RÉSISTANCE À L'ABRASION (ISO 12947/1-2)

100 000 cycles Martindale

### TENUE À LA LUMIÈRE (ISO 105 -B02)

4-5/5

### TRAITEMENT

Ignifugé norme EN1021 - 1/2

*Lavage déconseillé.  
Ne pas utiliser de produits détergents.*

## BRUTUS SÉRIE B

### COMPOSITION

Surface : Polyester : 100%  
Base : Polyester : 41%, Coton : 20%, PU : 39%

### RÉSISTANCE À L'ABRASION (ISO 12947/1-2)

32 000 cycles Martindale

### TENUE À LA LUMIÈRE (ISO 105 -B02)

4/5

### TRAITEMENT

Ignifugé norme EN1021 - 1

*Lavage déconseillé.  
Ne pas utiliser de produits détergents.*

## FIGURELLA SÉRIE B

### COMPOSITION

Polyester : 69%,  
Polypropylène : 31%

### RÉSISTANCE À L'ABRASION (ISO 12947/1-2)

50 000 c. Martindale

### TENUE À LA LUMIÈRE (ISO 105 -B02)

5/5

*Lavage déconseillé.  
Ne pas utiliser de  
produits détergents.*

## MONET SÉRIE B

### COMPOSITION

Polyester : 100%

### RÉSISTANCE À L'ABRASION (ISO 12947/1-2)

+25 000 c. Martindale

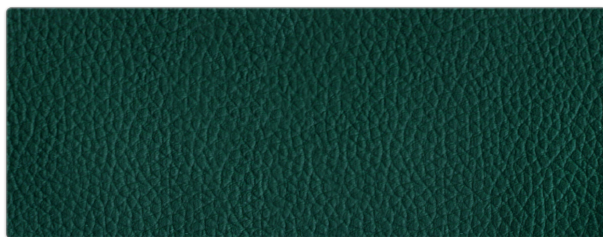
### TENUE À LA LUMIÈRE (ISO 105 -B02)

4+/5

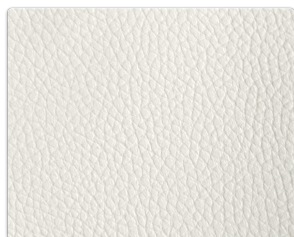
*Lavage déconseillé.  
Ne pas utiliser de  
produits détergents.*



## SÉRIE A SAHARA



VERT BOUTEILLE 07



BLANC 03



BEIGE 01



GRIS 13



TAUPE 12



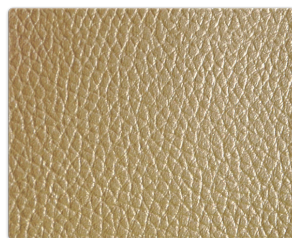
NOIR 04



MARRON 02

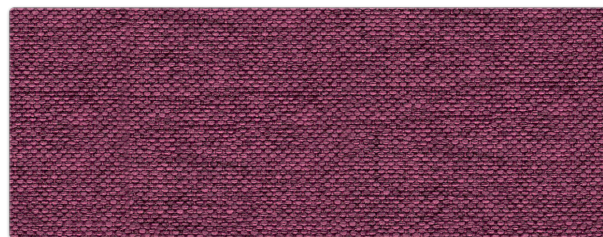


ARGENT 05

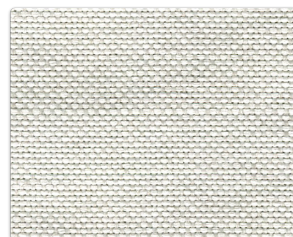


OR 06

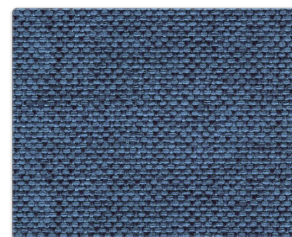
## SÉRIE A ROMER



MORA



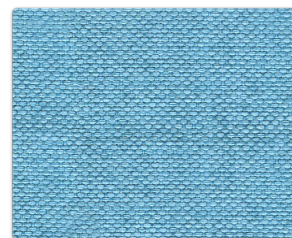
BLANCO ROTO



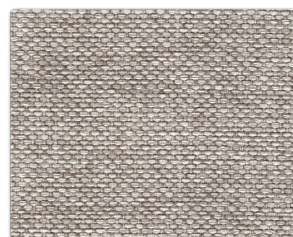
AZAFATA



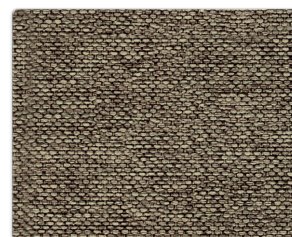
TIERRA



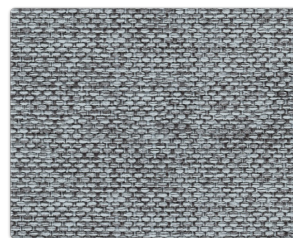
TURQUESA



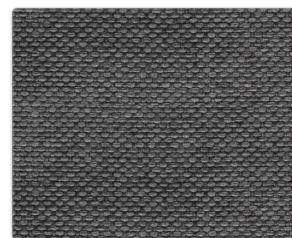
CENIZA



KAKI



GRIS



ANTRACITA

## SÉRIE A LUTI



PLATA



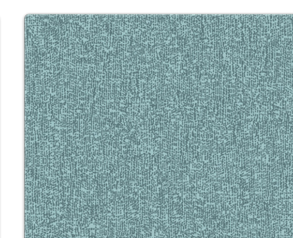
TAUPE



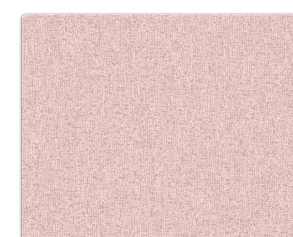
CIAN



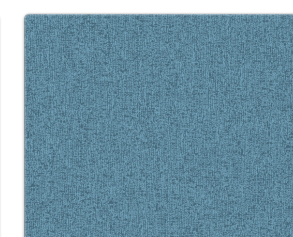
MARRÓN



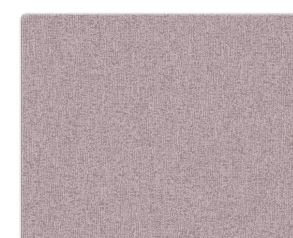
AGUA MARINA



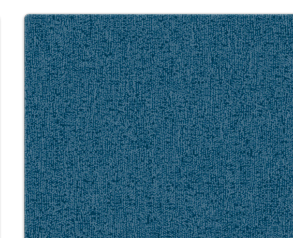
ROSA PALO



AZAFATA



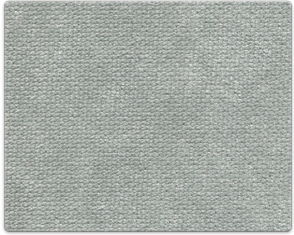
MAGENTA



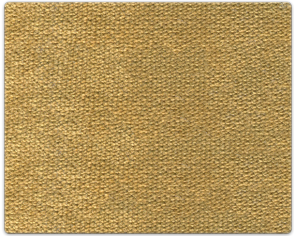
AÑIL



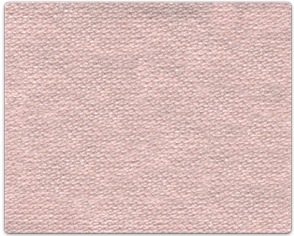
**SÉRIE B  
MADONE**



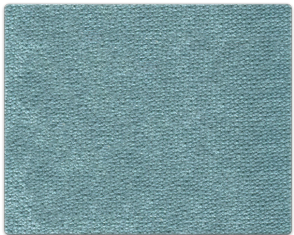
PLATA



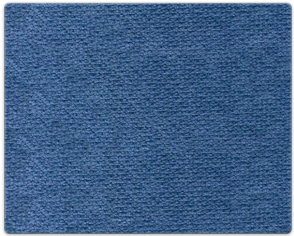
MOSTAZA



ROSA PALO

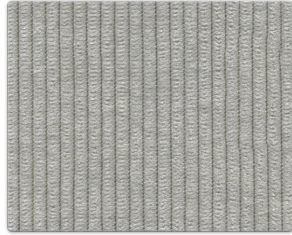


AGUA MARINA

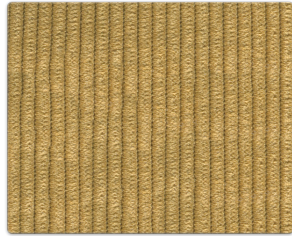


AZUL

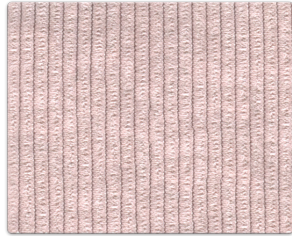
**SÉRIE B  
PANA**



PLATA



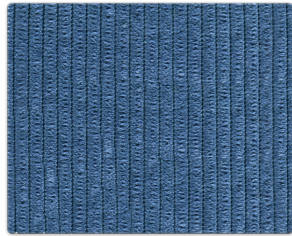
MOSTAZA



ROSA PALO

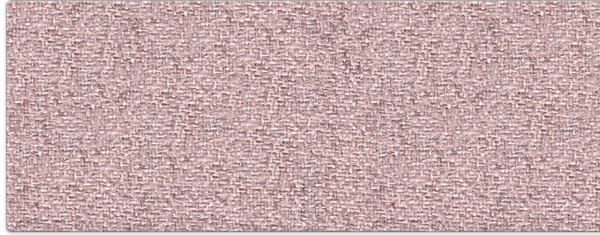


AGUA MARINA



AZUL

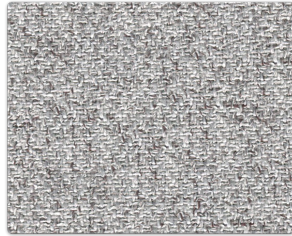
**SÉRIE B  
ALEXANDER**



ROSA



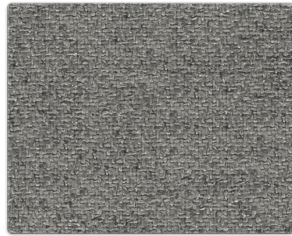
CRUDO



PLATA



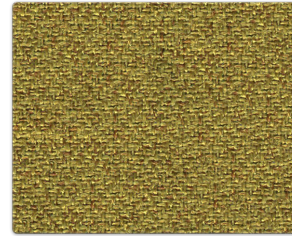
PIEDRA



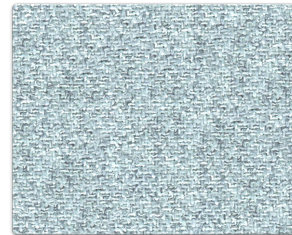
GRIS



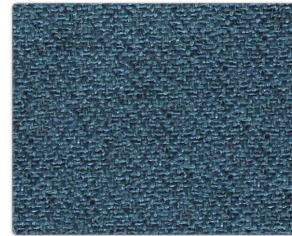
MOSTAZA



PISTACHO

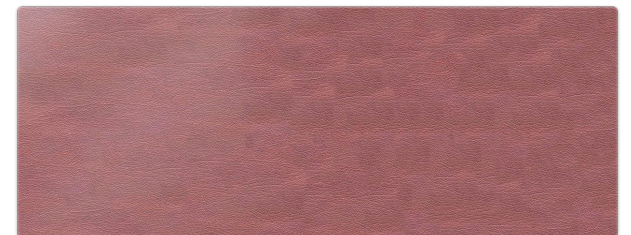


SKY



MARINO

**SÉRIE B  
NATUR**



VINO



IRON



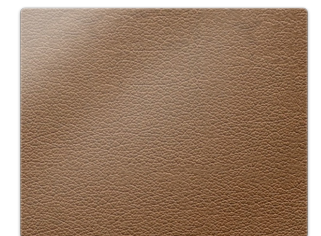
PLATINO



SILVER



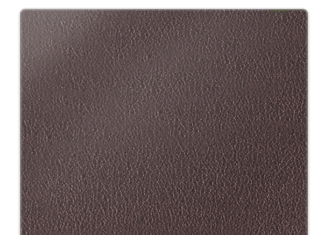
ZINCO



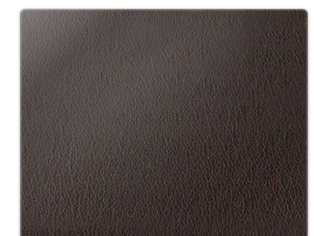
BRONCE



COBRE



BERENJENA



ANTRACITA



**SÉRIE B**  
MONTECARLO



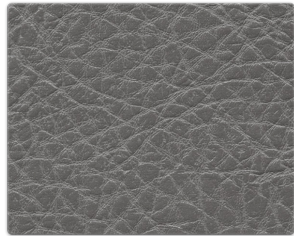
CLAY



WHITE



KHAKI



ASH



ELEPHANT



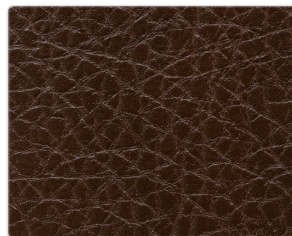
GREEN



CUOIO



BLACK

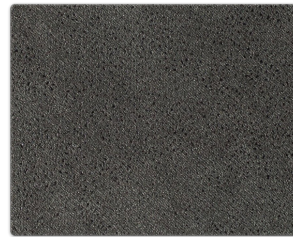


BROWN

**SÉRIE B**  
BRUTUS



TOFFEE



DARK GREY



CUOIO



OCEAN



CAMEL



SKY



ELEPHANT

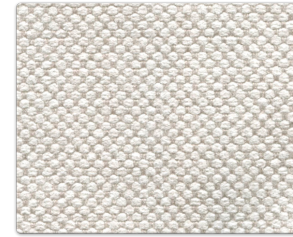


MOSS



LIGHT GREY

**SÉRIE B**  
FIORELLA



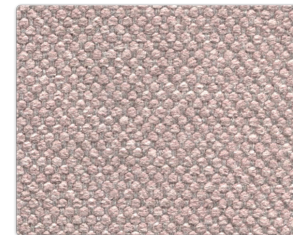
BLANCO



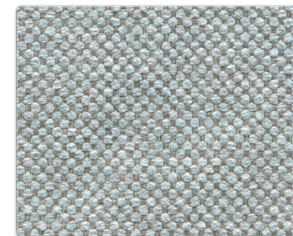
LINO



CRUDO



ROSA PALO



SKY

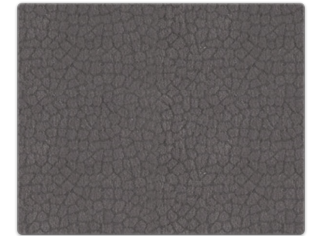
**SÉRIE B**  
MONET



PIEDRA



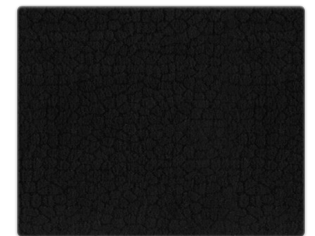
PLATA



HAMSTER



ANTRACITA



NEGRO